

Engineering Newsletter

No. 2016 – 08

April 4, 2016

Page 1 of 2

PARS Changes and Enhancements effective March 31, 2016

The following PARS enhancements went into effect on March 31, 2016:

- 1) When the user selects a rail task work order, the number of Rail Joints entered needs to match the tap out screen.

WO Name	Task Name	P / U	Plan Item	AFE	LS	P. BMP	P. EMP	Track	Trk No.	Work Order
DCAR-REPAIR-32344	FOLLOW D CAR / REPORT RAIL DEFECT REPAIR ##	P	2005016	36	1117.000	1208.800	Main	Multiple	B74507818400600616	

- 2) If the Rail Joints information entered on the tap out screen doesn't match to the number of units entered in PARS, the user will receive an error message:

Work Order Details

Error in Work Order

Rail Joint production units is not equal to the number of Rail Joints created in the Rail JT Creation Screen. Work Order ID - B74507818400600616

OK

Additional Info

Report Weld Attributes | Report Dfct Repair
Report Service Failures | Report SIR Exceptions
Report Material | Report Rail Attributes
Report Rail JT Creation | Report Grind Activity
Report Turnout Mite | Report Surfaced Track

Work Order Info

Task Name: FOLLOW D CAR
AFE: 2005016
* Account Type: OPERATING
* Status: Incomplete

Production Info

Primary Production

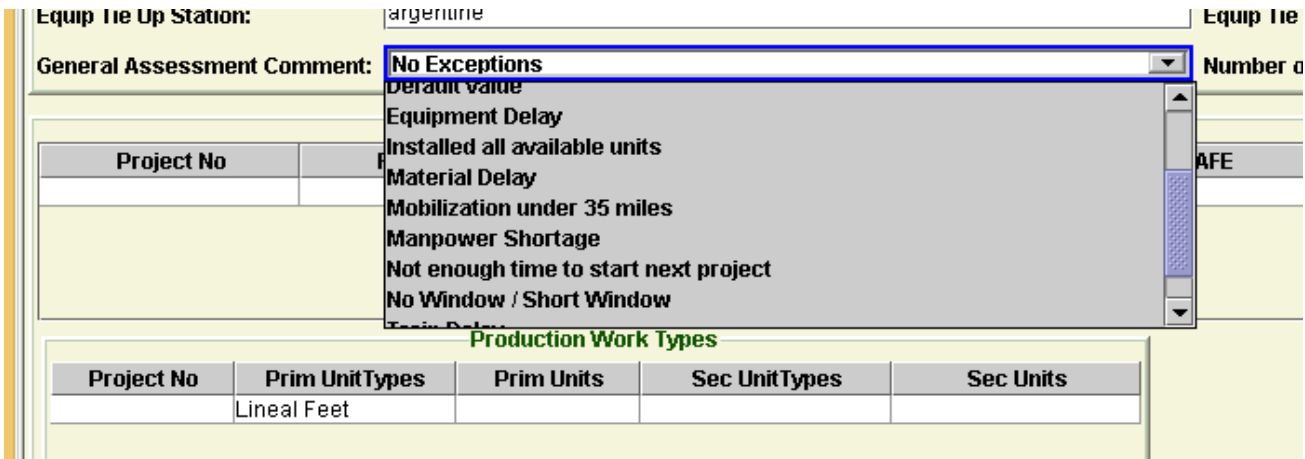
Unit Type: Welds
Units: 0
Zero (0) production units valid for support gangs

Secondary Production

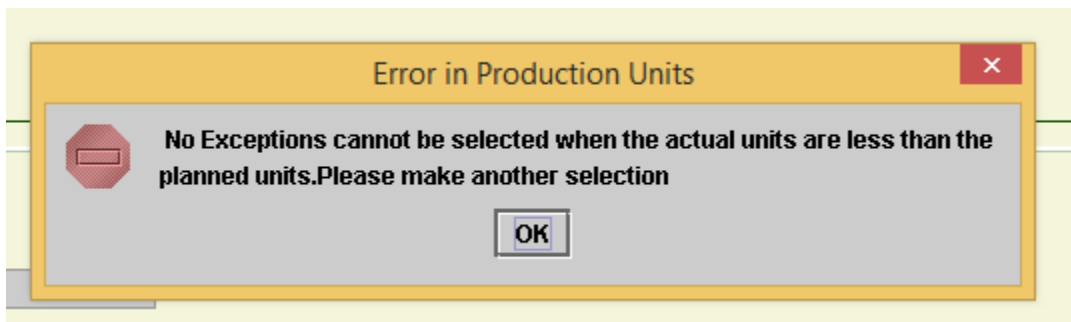
Unit Type: Rail Joints
Units: 1
units must match # joints added on Engineering Defects page (tap out screen)

- 3) If joints have been added under a work order, there must also be rail attributes (gap, pull, temp) entered for that work order.

- 4) Users will not be allowed to delete a work order if joints have been created with that work order ID.
- 5) When the user clicks the Select All button, employees who have entered absences in timekeeping screens will not be selected. This enhancement applies to the following screens:
 - a. Time & Expense Section, Lineup tab
 - b. Time & Expense Section, Time & Expense Entry tab
 - i. Employee Selection
 - ii. Meals, Lodging & Other
 - iii. Personal Vehicle & Travel
- 6) Additional options have been added to the General Assessment Comments drop down list.



- 7) Production Gangs Only – An error message will be shown if the user provides actual units that are less than the planned rate and then selects the No Exceptions option in the General Assessment Comments dropdown list.



~Please share this information with members of your team as needed.~